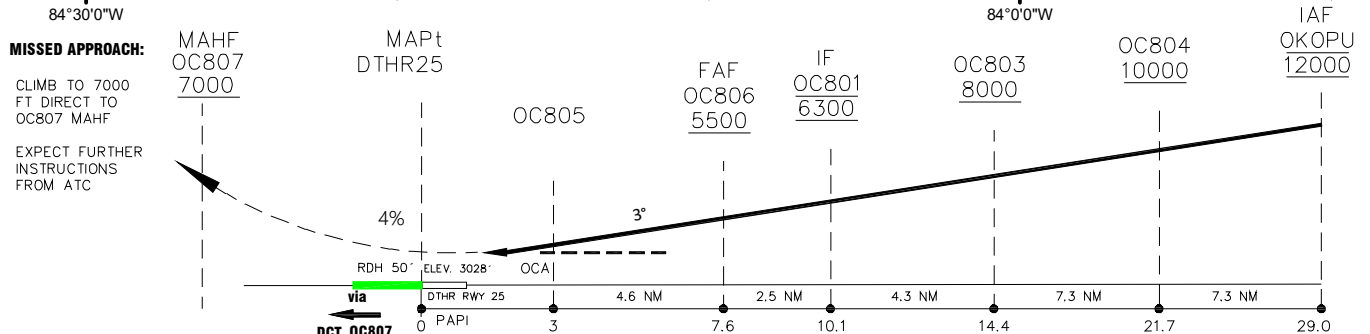
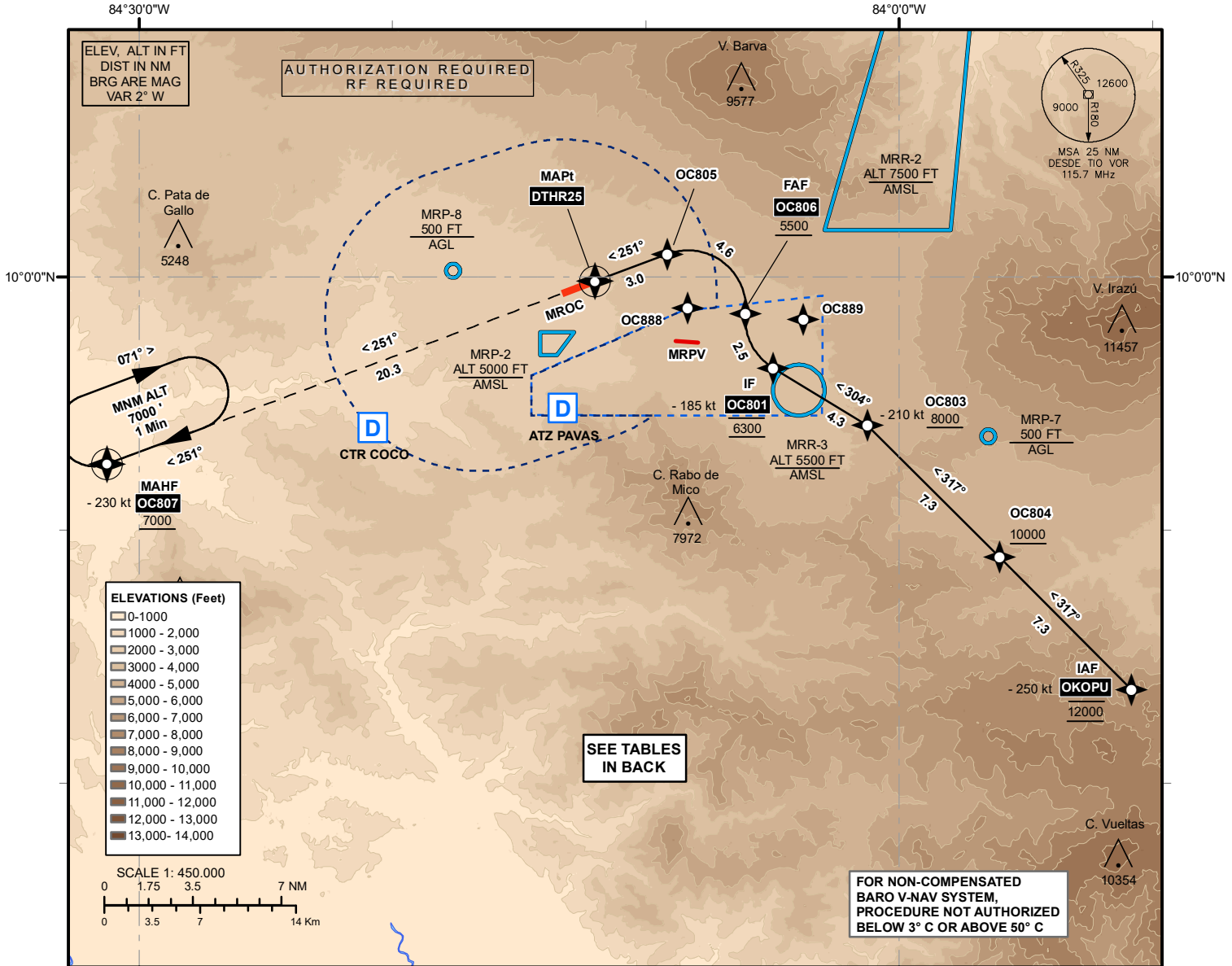


**INSTRUMENT APPROACH
CHART**

AD ELEV 3048 ft
DTHR RWY25 ELEV 3028 ft
T.A. 19.000 ft

ACC 119.6
APP 120.5
TWR 118.6

**ALAJUELA, Intl (MROC)
RNP E RWY 25 (AR)**



RWY 25 RNP E (AR)	CAT				CIRCLING			
	RNP 0.3	A	B	C	D	N/A		
	OCA/H	(550')	(560')	(570')	(580')			
	RNP 0.1	A	B	C	D			
	OCA/H	(310')	(320')	(330')	(340')			
Ground Speed	KT	90	100	120	140	160	180	200
VSP 5.2% (3°)	FT/MIN	478	531	637	743	849	955	1061
FAP to MAPt 7.6 NM	MIN:SEG	05:03	04:33	03:48	03:15	02:51	02:32	02:16